

## Cabinet cooling unit



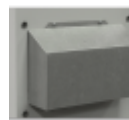
### Description

<b>Order Number:</b>	852510001
<b>Brand Name:</b>	SLIMLINE PRO
<b>Colour:</b>	RAL 7035
<b>Housing Material:</b>	Mild steel, powder coated
<b>Ingress Protection:</b>	IP 55 / Type 12
<b>Approvals:</b>	CE, cURus, cULus

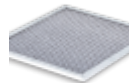
#### Accessories:



Gasket Kit Type 4/4X



Cold Air Outlet Duct 8515/20/25



Washable Aluminium Filter 8515/20/25



Vibration Protection Kit 2

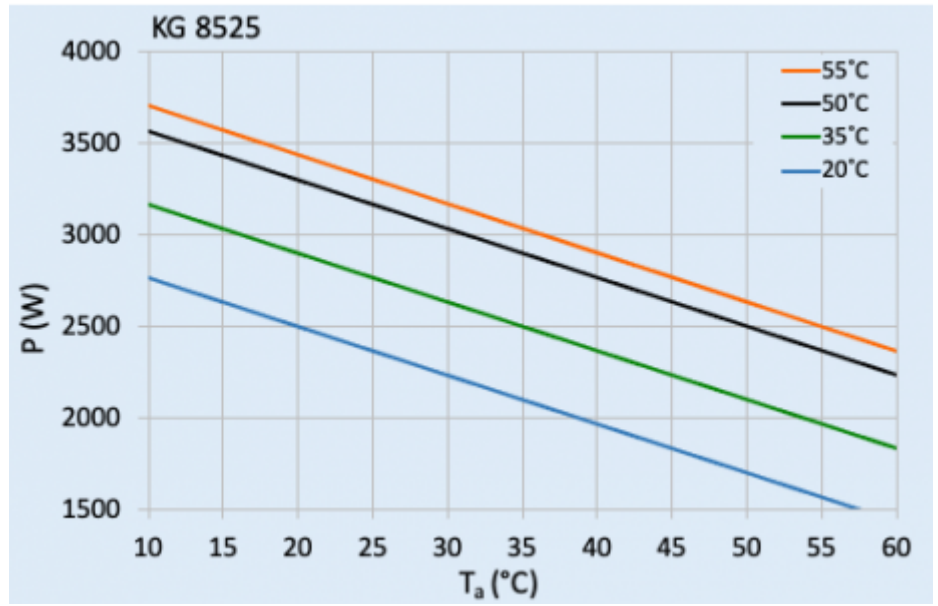
## Technical Data

<b>Cooling capacity L35L35:</b>	2.5 kW @ 50 Hz 2.5 kW @ 60 Hz
<b>Cooling capacity L35L50:</b>	2.1 kW @ 50 Hz 2.1 kW @ 60 Hz
<b>EER L35L35:</b>	2.08
<b>Compressor type:</b>	Rotary piston
<b>Refrigerant / GWP:</b>	R134a / 1430
<b>Refrigerant charge:</b>	400 g / 14,1 oz
<b>High / low Pressure:</b>	30 / 6 bar 435 / 88 psi
<b>Operating Temperature Range:</b>	10°C - 60°C
<b>UL temperature range:</b>	10°C - 60°C
<b>Air flow volume (system / unimpeded):</b>	Ambient air circuit: 680 / 1200 m <sup>3</sup> /h Cabinet air circuit: 500 / 850 m <sup>3</sup> /h
<b>Mounting:</b>	Wall mounted / recessed
<b>Dimensions A x B x C (D+E):</b>	1,350 x 395 x 210 (55+155) mm
<b>Weight:</b>	46.5 kg
<b>Voltage / Frequency:</b>	120 V ~ 50/60 Hz
<b>UL Voltage / Frequency:</b>	120 V ~ 60 Hz
<b>Current L35L35:</b>	10.8 A @ 50 Hz 13.2 A @ 60 Hz
<b>Starting current:</b>	11 A
<b>Max. current:</b>	19.3 A
<b>Nominal power L35L35:</b>	1.2 kW @ 50 Hz 1.47 kW @ 60 Hz
<b>Max. power:</b>	1.95 kW
<b>Fuse:</b>	25 A (T)
<b>Max circuit ampacity:</b>	20 A
<b>Short-circuit current rating:</b>	5 kA
<b>Rated current compressor:</b>	10 A

<b>Full load current fans:</b>	1.5 A
<b>Connection:</b>	4 pole terminal for power 5 pole terminal for signals

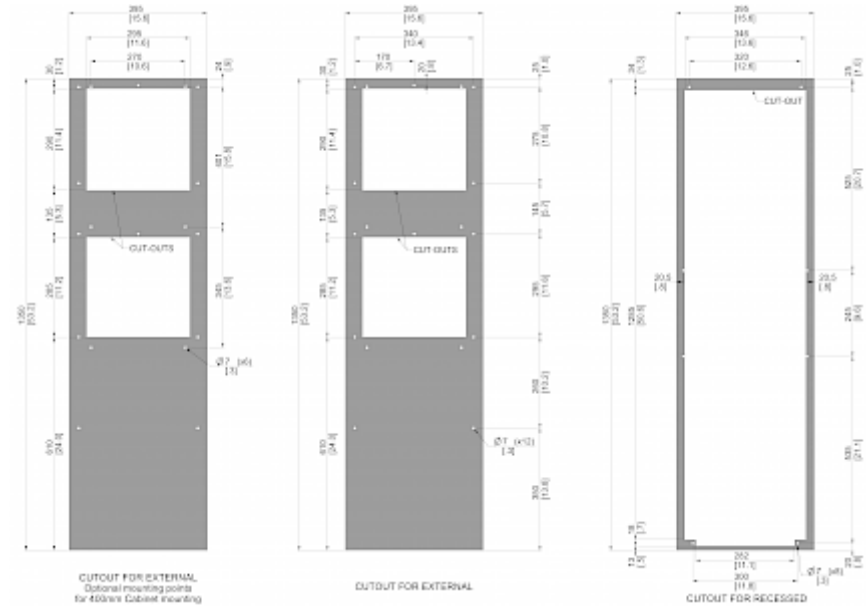
Please click on the graphics to download.  
More CAD drawings can be found under [Product Download](#).  
> [Overview Product Group Cooling Units - SLIMLINE PRO](#)

**Performance graph:**



click image to enlarge

**Cut Out Dimension:**



click image to enlarge

## Order Information

<b>Box dimensions</b>	1442 x 495 x 242 mm
<b>Gross weight</b>	52.5 Kg
<b>Taric code</b>	84158200
<b>GTIN (EAN)</b>	5350604390171